

Claim your seat at the table: Adaptive Governance Toolkit to bring in community voices into catchment and community regeneration

Sandra J. Velarde, Tim Barnard, Tui Warmenhoven,
Pia Pohatu, Lisa Sharma-Wallace, Peter Edwards,
Lania Holt, Andrew Dunningham, Barbara King, Jeff
Coutts

IUFRO, Curitiba, 30th September 2019

**Weaving
the Korowai**



SCION

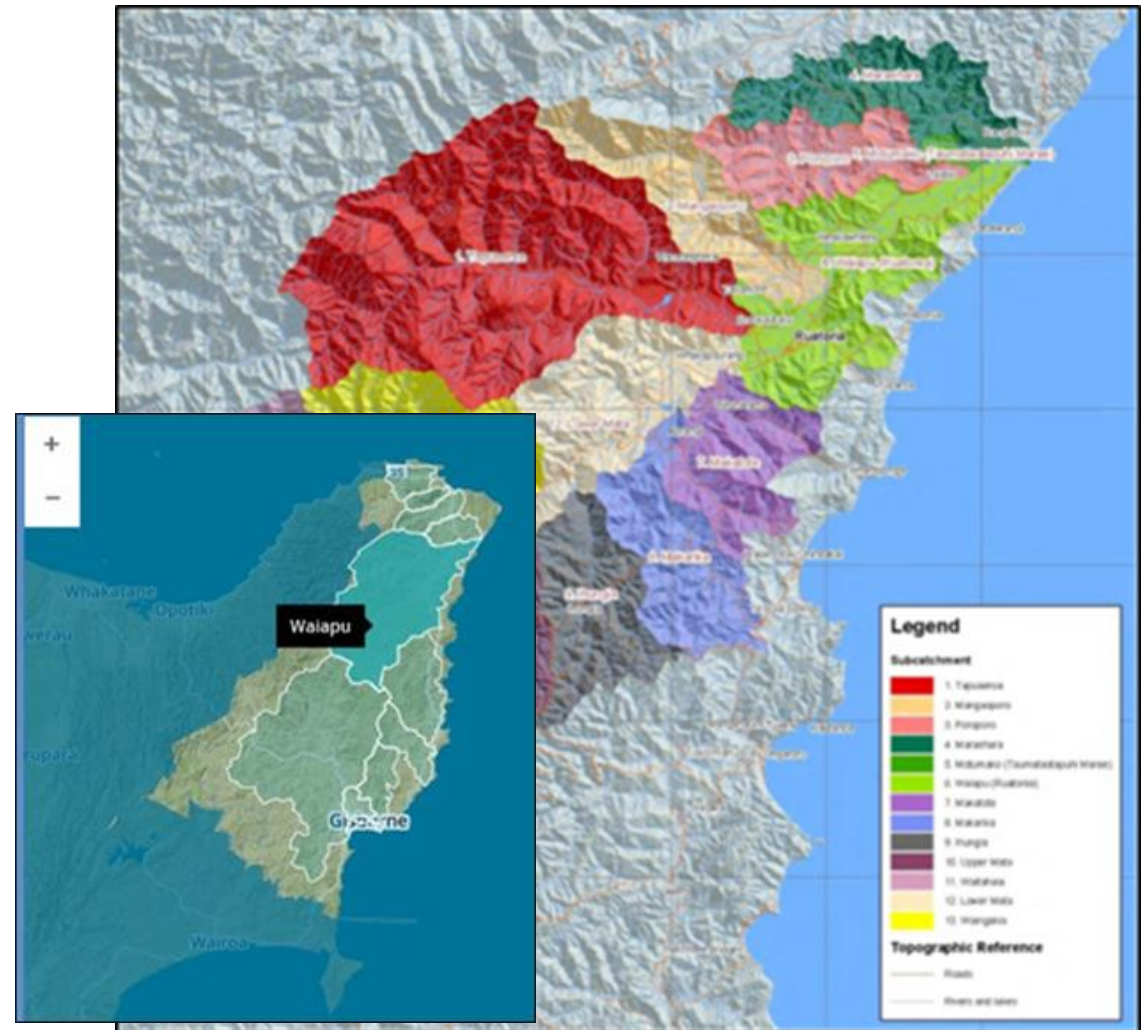


The community: Ko Waiapu te Awa – He Oranga mo Nga Uri Tuku Iho Trust

Rohenga Tipuna and Primary Marae Map.



Ngati Porou sees the East Coast as a Cultural landscape, where relationships live.



Western view: Geographic boundaries, district and subcatchments within the Waiapu catchment.



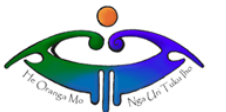
Working in partnership with Māori





Kaitiakitanga & Community Regeneration

Holistic, balanced, intergenerational, traditional, mahinga kai, place, wananga, expertise



“Weaving the Korowai of Papatūānuku”

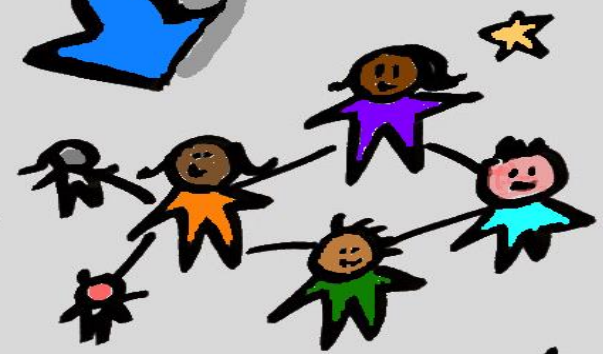
Weaving
the Korowai



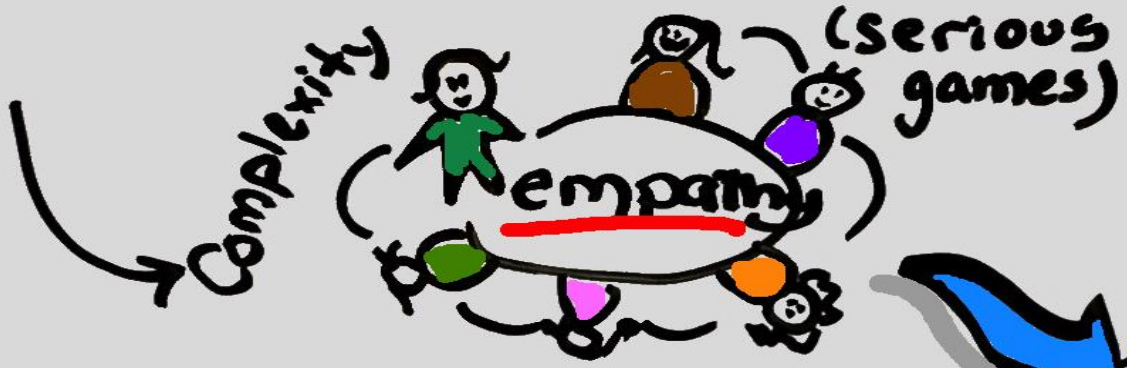
ADAPTIVE GOVERNANCE Toolkit



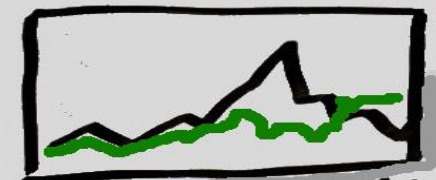
Understanding culture & context



Identify future & current local leaders, skills & resources



Common aspirations



keeping track of progress

More ... From Adaptive to Anticipatory?



Connect people & knowledge across scales.

ADAPTIVE GOVERNANCE

TOOLKIT

Tool 3 – Catchment 2030 – Games to tackle complex problems


Understanding culture & context



Tool 2 – Social network analysis: Grassroots regeneration & local leadership

Complexity



Common aspirations

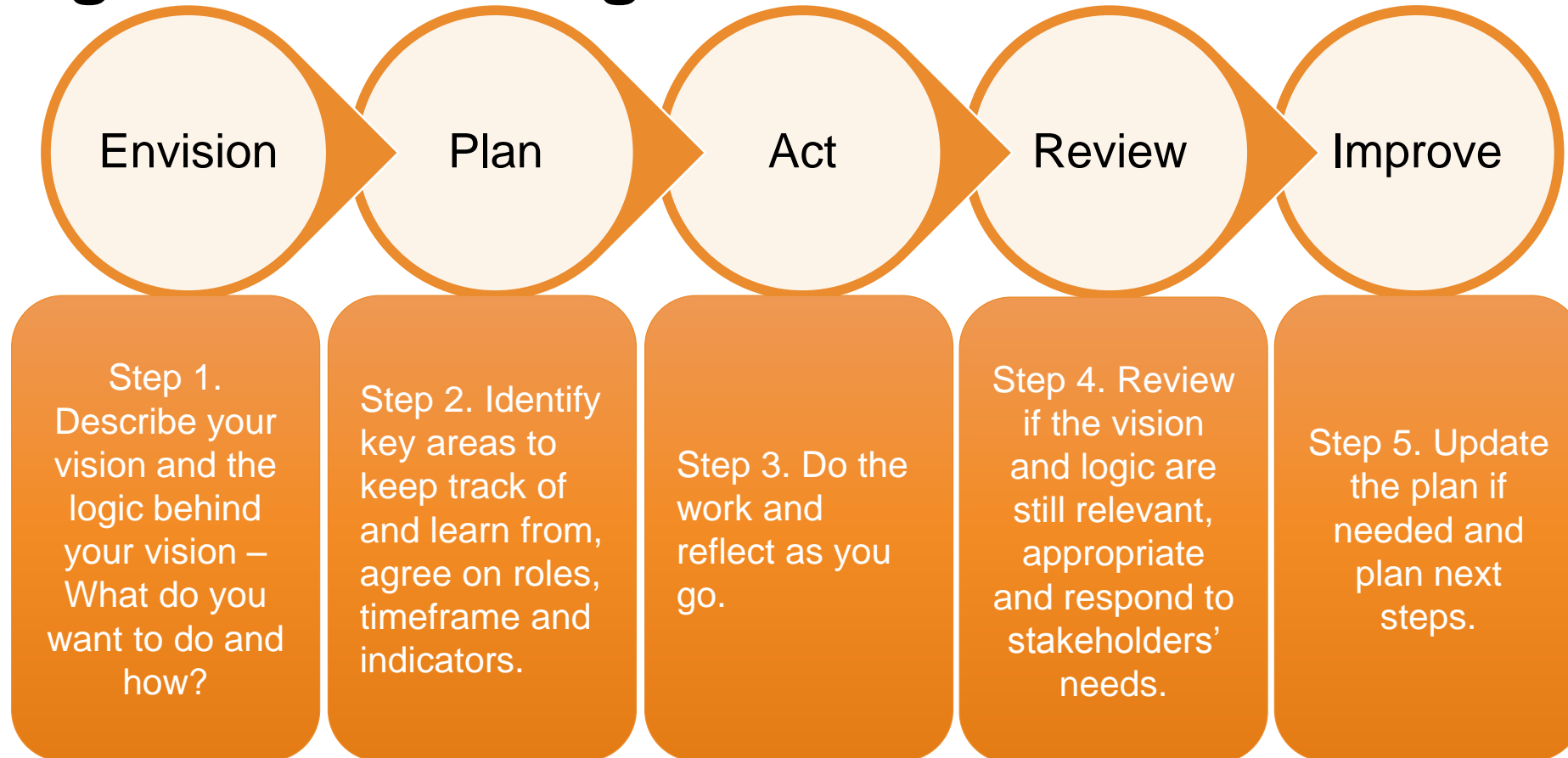
Tool 1 – Monitoring & Evaluation – Tracking progress and change

More ... From Adaptive to Anticipatory?



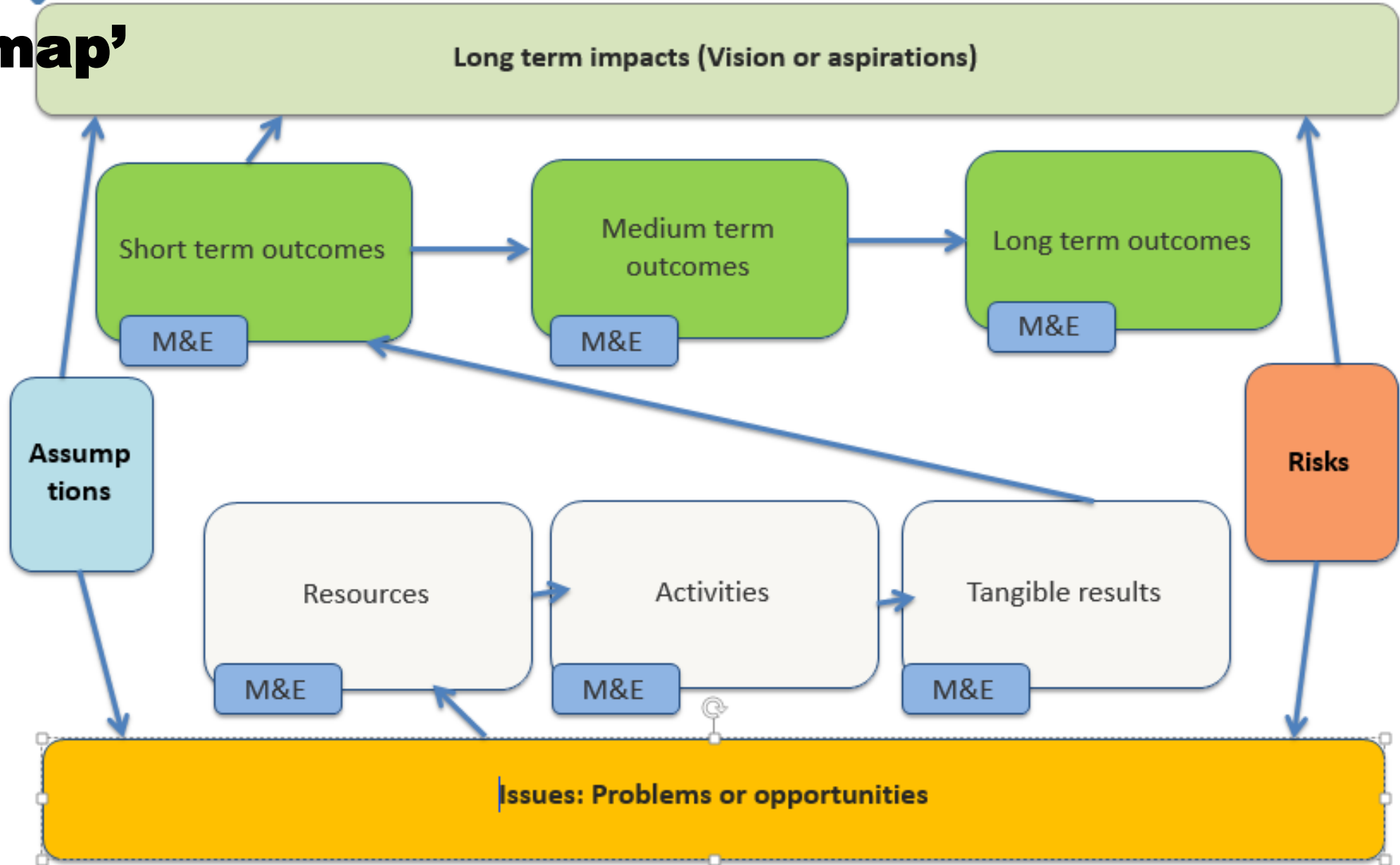
Connect people & Knowledge across scales.

Tool 1: Monitoring and Evaluation – Tracking progress and change

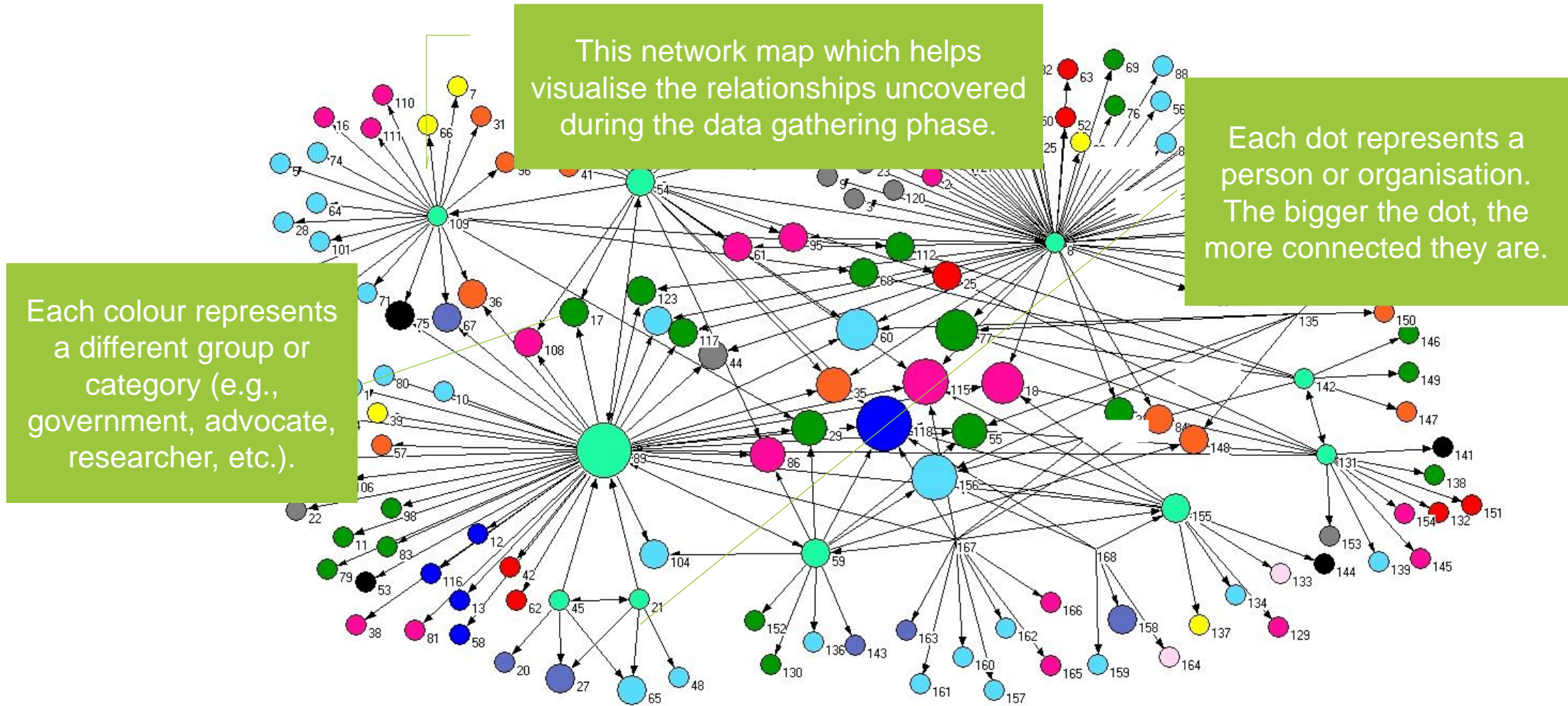


Fillable 'vision map'

Appendix. Vision map (logic framework)



Tool 2: Social network analysis (SNA) – Grassroots regeneration and local leadership



How do you apply it?

Identify

- Decide on your question(s) - what do you want to know?
- Identify your stakeholders.

Gather

- Decide how you want to gather your data. Different approaches will give you different insights.
- Gather your data.

Analyse

- Analyse and interpret your data (by hand or using computer software).

Review

- Review the results with your stakeholders: Do the results make sense to them? What actions need to be taken to address the findings?
- Repeat the process to see if the networks have changed over time and if further action needs to be taken.

Tool 3: Catchment 2030 – Games to tackle complex problems



- Ruatoria
- Gisborne
- Wellington x 2
- Christchurch x 2
- Southland

+200 participants to date..

81% said these workshops had influenced their thinking about catchment restoration.

**Weaving
the Korowai**



SCION
FORESTS • PRODUCTS • INNOVATION

SCION

How do you apply it?

Plan

- Who and what: Identify your stakeholders and the key issues you want to address.
- Design or choose the game that best fits your purposes.
- Define what characters should take part in the game.

Play

- Take care of logistics: space, time, process.
- Play the game: Welcome and set the scene, follow the game instructions.

Debrief

- Debrief with participants after the game. Document immediate insights and learnings.
- Monitor changes in participants' thinking and behaviour – after 1 month, 3 months, 1 year.

www.scionresearch.com/adaptivegovernance

Velarde SJ (2018) (ed.) *Adaptive Governance: A toolkit for action - Beta version*. Scion, He Oranga mo Nga Uri Tuku Iho Trust. Available at: <https://bit.ly/2trlpWW>

Velarde SJ, Sharma-Wallace L, Warmenhoven T, Pohatu P, Edwards P, Barnard T (2019). Policy design lessons from the Erosion Control Funding Programme – afforestation through an adaptive governance lens. *New Zealand Journal of Forestry*, 64(1): 11-16

Edwards, P., Sharma-Wallace, L., Wreford, A., Holt, L., Flood, S., Cradock-Henry, N., Velarde, S.J. (In press) Tools for adaptive governance for complex social-ecological systems: A review of role-playing-games as serious games at the community-policy interface. *Environmental Research Letters*, <https://doi.org/10.1088/1748-9326/ab4036>

Sharma-Wallace L, Velarde SJ, Edwards P, Warmenhoven T, Pohatu P (2019). Exploring adaptive forest governance for indigenous peoples: Lessons from Aotearoa New Zealand's Erosion Control Funding Programme. *Society and Natural Resources*, <https://doi.org/10.1080/08941920.2018.1557308>

Edwards P, Sharma-Wallace L, Barnard T, Velarde S, Warmenhoven T, Fitzgerald G, Harrison D, Garret L, Porou T, Pohatu P (2019). Sustainable livelihoods approaches to inform government-local partnerships and decision-making in vulnerable environments. *New Zealand Geographer*, <https://doi.org/10.1111/nzg.12214>

Sharma-Wallace L, Velarde SJ, Wreford A (2018) Adaptive governance good practice: Show me the evidence! *Journal of Environmental Management* 222: 174-184, <https://doi.org/10.1016/j.jenvman.2018.05.067>

Edwards P, Velarde SJ, Sharma-Wallace L, Barnard TD, Pohatu P, Warmenhoven T, Porou T, Harrison DR, Dunningham AG (2018) Forest scholars empowering communities: A case study from the East Coast of New Zealand. *Forest Policy and Economics* 91: 46-53, <https://doi.org/10.1016/j.forpol.2017.09.001>

Acknowledgements

- **Research team:** Andrew Dunningham, Lisa Sharma-Wallace, Lania Holt, Duncan Harrison, Barbara King, Peter Edwards, Sandra J. Velarde, Tui Warmenhoven*, Pia Pohatu*, Mary-Anne Gloyne and Vicky Hodder.
- Not in picture: Tim Barnard, Jeff Coutts, Soltice Morrison.
- Advisory group: Dave Moore, Vicki Compton, Brigid Carrol, Tracy Williams, John Reid, Debbie Martin, Tina Porou.
- **Funding:** MBIE (Contract C04X1502) & Scion.



**MINISTRY OF BUSINESS,
INNOVATION & EMPLOYMENT**
HĪKINA WHAKATUTUKI



www.scionresearch.com



Prosperity from trees *Mai i te ngahere oranga*

Scion is the trading name of the New Zealand Forest Research Institute Limited